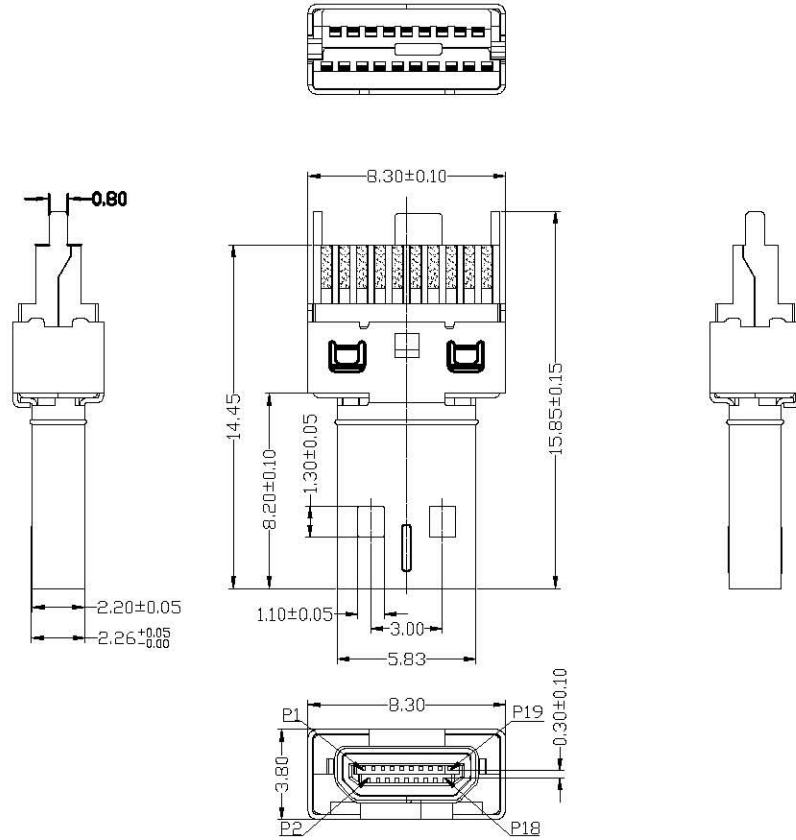


RoHS Compliant

REV.	ZONE	DESCRIPTION	DESIGN	DATE
A		初版发行	Jack	19.03.25



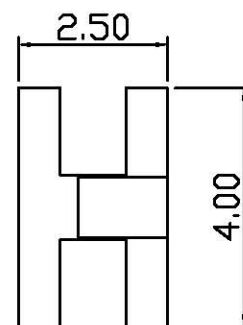
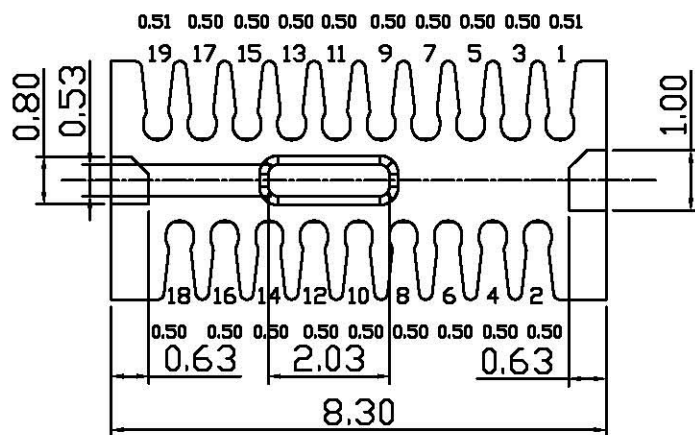
NOTE:

1. Electrical
 - 1.1. Rated Voltage: 40V AC/DC maximum
 - 1.2. Rated Current: 0.3A max.
 - 1.3. Dielectric strength: 150V AC/1 minute
 - 1.4. Insulation Resistance: 150V DC 10MΩ min.
 - 1.5. Contact Resistance: 40mΩ Max.
2. Mechanical
 - 2.1. Insertion Force Max: 4.5kgf max.
 - 2.2. Removal Force Min: 0.5kgf min. , 2.5kgf max.
 - 2.3. Durability: 5,000 cycles at 100+150 cycles per hour
3. Plating
 - 3.1. Terminal: Contact area: gold plated over 50u" NI min.
Soldered area: 100u" mist TIN plated over 50u" NI min.
 - 3.2. Shell: G/F plated over 50u" NI min.
4. Ambient Temperature: -25. C To +85. C

LATCH	PBT	1	BLACK, UL 94V-0
SHELL	C2680	1	GOLD PLATED OVER G/F, PLATED OVER 50u" NI min.
9Pin CONTACT	C5191	9	CONTACT AREA: GOLD PLATED OVER 50u" NI min. SOLDED AREA: 100u" MIST TIN PLATED OVER 50u" NI min.
10Pin CONTACT (SHORT)	C5191	10	SOLDED AREA: 100u" MIST TIN PLATED OVER 50u" NI min.
BACK INSERT HOUSING	LCP	2	BLACK, UL 94V-0
HOUSING	LCP	1	BLACK, UL 94V-0
PART NAME	Mechanical	QT* Y	NOTE

Unless otherwise specified tolerances are		COORLE TECHNOLOGY 东莞市库乐信息科技有限公司						
X.X	±0.25	DRAW NO.	DATE	DRAW NAME:				
X.XX	±0.20							
X.XXX	±0.15	DWN	Jack	19.03.25	HDMI D/M 19P 焊线式 (自动焊)			
X°	±2.0°	CHK			P/N :			
X.X°	±1.0°	APVD						
 Third Angle Project		FINISH		UNIT	SCALE	WEIGHT	REV	SHEET
		MATERIAL		mm	1:1		A	1 OF 1

REV.	DESCRIPTION	DRAWN/DATE	APPROVED/DATE
A	NEW	JACK/2019.07.29	JACK/2019.07.29



备注:

1. 材料: PA66 30%GF BLACK;
2. 产品毛边0.2mm MAX,变形0.2mm MAX;

GENERAL TOLERANCE	ANGLE TOLERANCE	DRAW DATE JACK/2019.07.29	COORLE TECHNOLOGY 东莞市库乐信息科技有限公司	
.X ±0.30	.X° ±2°	DESIGN DATE JACK/2019.07.29	FILE NAME(品名)	HDMI D TYPE 公头 32#线夹
.XX ±0.20	.XX° ±1°	CHECK DATE	PART NO(料号)	
.XXX ±0.10	.XXX° ±0.5°	APPRO DATE	DRAWING NO(图	REV. A
UNIT: mm	SCALE 1:1			
A4	SHEET: 10F1			